




DATA SHEET



Simple.
Efficient.
Affordable.

Fundamental Elements

- Policy Management
- Real-Time Statistics
- Device Wipe/Lock/Locate
- App Management
- Secure Content Application Containerization
- Reporting & Logging
- Compliance Management
- Self-Service Portal

Supported Devices

- Apple iOS
- Android
- BlackBerry 10
- Legacy BlackBerry utilizing GO!EnterpriseSync
- Windows Mobile
- Windows Phone
- Symbian
- TouchDown for iOS & Android

Delivery

- On-Premise
- On-Demand (cloud)
- SSAE-16 certified
- 99.9% availability
- Supports VM
- Multi-tenant

GLOBO

- Providing mobile solutions since 1997
- Support Centers in USA and Europe
- Highly accessible
- Highly responsive
- Affordable licensing
- Quality pre and post sales support
- Agile development

Mobile Device Management

As mobile devices continue to penetrate the workplace, organizations face new challenges in maintaining proper levels of visibility and control over their users and the data they are accessing. It is here that GO!Enterprise MDM provides its value – relieving the pain points associated with the inherent risks of consumer-driven technology in the enterprise.

The Challenge: Control, Oversight, Enforcement

The proliferation of mobile devices in the workplace, whether they are smartphones or tablets, corporate or employee owned, continues to task IT business decision makers with having to address the many challenges of adopting a secure mobility strategy.

- Define and enforce usage policies
- Provision users for secure access
- Monitor and identify users on the network
- Separate corporate and personal data
- Determine what apps can be used
- Maximize business usage efficiencies
- Disable features in regulated environments
- Protect against lost or stolen devices
- Establish a course of action for device misuse
- Achieve scalability for business growth

The Solution: GO!Enterprise MDM

GO!Enterprise MDM provides organizations of any size, real-time visibility and control over a variety of mobile devices regardless of operating system, liability, carrier, or email platform. Whether on-premise or in the cloud, GO!Enterprise MDM provides a number of features including policy creation, real-time device and user statistics, app management, secure content management, compliance management, audit tracking, and report generation, all from a single administrative console.



The solution is designed to be simple, efficient, and affordable. GO!Enterprise MDM provides organizations an intuitive, user-friendly way of simplifying the complexities of supporting a mobile workforce.

Advantage: GLOBO

- Enhance your Enterprise Mobility capabilities with GO!Enterprise container and a mobile application development platform
- Consultative approach
- Framing mobility strategies
- Crafting Acceptable Usage Policies
- Sharing customer Best Practices
- Managing implementation of GO!Enterprise MDM
- Engaged from planning through post deployment



“We decided to implement a 1-to-1 roll out of Android devices to every student from 2nd grade to 12th grade. Working with GO!Enterprise MDM we were able to identify our requirements as well as satisfy the concerns of both the parents and our Security Department.”

– Director of IT
K-12 School District

“Our organization is ruled by HIPAA compliance requirements. After telling our physicians they could not utilize iOS and Android tablets, because of these requirements, we were finally able to find the justification to allow them. GO!Enterprise MDM provided us with the ability to help meet our HIPAA requirements. Globo helped us define the business case to justify their usage.”

– Mgr Network Security
Healthcare Company

“Working with GO!Enterprise MDM we were able to form a policy to begin billing for content specific text messages with our clients. GO!Enterprise MDM allows us to capture and conduct eDiscovery for SMS text messages.”

– Senior Partner
Law Firm

GO!Enterprise MDM Fundamental Features

Security

- Remote wipe (full or corporate data only)
- Remote lock
- Feature restrictions (camera, Wi-Fi, etc.)
- Network authentication
- On device encryption
- Jailbreak/root detection
- Password settings
- Disable iCloud, YouTube, iTunes, etc.

Policies

- Policy suite creation (Corporate & BYOD)
- Compliance management & access restrictions
- Time-based policy enforcement
- Role-based administration
- Audit tracking
- Device control (Bluetooth, browser, etc.)
- Advanced settings for TouchDown

Application Management & File Sharing

- Remote install or uninstall apps
- Whitelist/Blacklist apps
- File push and update

Real-Time Statistics

- Device location and history trail
- Downloaded/Uploaded data
- Battery level, memory, signal strength
- Device type, model, OS version
- Carrier, roaming, encryption status
- Installed apps and versions
- Liability, policy, connection schedule

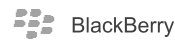
Graphical Dashboard Monitor

- View by policy, platform, carrier
- View by ownership, liability, data plan
- View by roaming, text/minutes usage
- View carrier and platform trends
- Customizable drag and drop panels

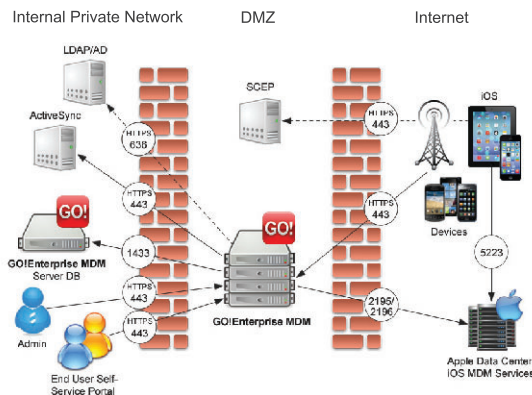
Optional End User Self-Service Portal

- Mobile and desktop portals
- Locate device
- Get recovery password
- Remote wipe/lock device
- Wipe storage card
- Administrative oversight

This represents a sampling of supported features. Features will vary per device operating system. Contact GLOBO for complete listing.

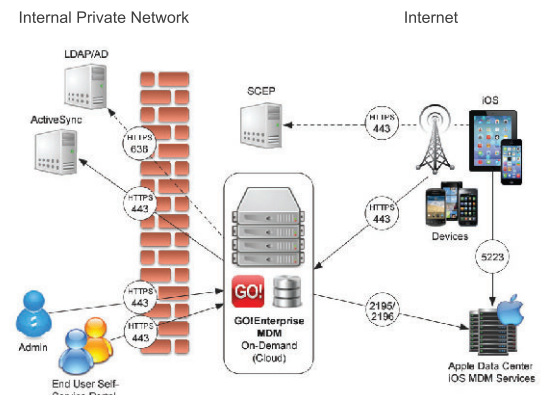


On-Premise



Dashed lines indicate optional connections

On-Demand (Cloud)



New York

247 West 35th Street, NY 10001
Tel: +1 (646) 307 1614

San Jose

1054 South De Anza Blvd., Suite 105, CA 95129
Tel: +1 (408) 777 7930

London

41 Lothbury, EC2R 7HG U.K.
Tel: +44 (0) 207 378 8828

Athens

67 E. Antistaseos Street, 152 31 Halandri, Greece
Tel: +30 21 21 21 7000